



MANUAL

# 365id | Sixt Cobra Integration



**Table of contents**

TABLE OF CONTENTS

<b>Before you start</b>	<b>3</b>
<b>Installation &amp; Requirements</b>	<b>4</b>
Installation 365id Integration – Sixt Cobra (USB)	4
Requirements	4
<b>Installation</b>	<b>5</b>
Installation	5
Connect USB Cable	5
<b>Installation – USB Support software</b>	<b>6</b>
Install 365id Integration – USB Support software	6
Install 365id Integration – USB Support software – 2	7
Install 365id Integration – USB Support software – 3	8
<b>Installation – Sixt Cobra (USB) software</b>	<b>9</b>
Sixt Cobra (USB) software	9
<b>Sixt Cobra (USB) service subscription</b>	<b>10</b>

## Before you start

### Before you start

The 365id Scanner integrated with your Sixt Cobra application enables the 365id Scanner to automatically insert textual information from scanned driving licenses and passports into your Sixt Cobra application.

A notification with the result of the latest scan will also be presented in the web browser (Google Chrome) The 365id Integration adds information from the scanned ID documents into the following pages into Sixt Cobra:

- Rental Agreement – Check out
- Reservation – Reservation System

NOTE – For the information to be filled in correctly, one of the above pages must be active within three minutes from the scan of the ID document. This is a security measure to avoid that the information is filled into the wrong customer's booking.

## Installation

### **Installation 365id Integration – Sixt Cobra (USB)**

The 365id Integrations – Sixt Cobra (USB) software is built around two applications that must be installed on the local computer.

- The 365id Integrations – USB Support software receives the scanned ID documents information and scan result from the 365id Scanner via an USB cable and makes it available to the 365id Integrations – Sixt Cobra software
- The 365id Integrations – Sixt Cobra (USB) software transfers the textual information from scanned ID document into the correct fields in the Cobra application. It also contains a notification that shows the result of the last scanned documents.

### **Requirements**

- Windows 7 or higher with the latest service pack installed
- Google chrome browser
- 365id Scanner
- USB cable
- 365id Integration – Sixt Cobra (USB) service subscription with 365id

If the Notification service will be used, a 365id Integration – Notification (USB) service subscription must be activated with 365id

## Installation

### Installation

The installation process consists of several steps:

- Connect USB Cable, male USB A to male USB B
- Install 365id Integration – USB Support software
- Install 365id Integration – Sixt Cobra (USB), Plugin for chrome

Make sure you have activated Sixt Cobra service subscription

### Connect USB Cable

Connect an USB cable, male USB A to male USB B, between the 365id Scanner and your local computer. The USB cable is a standard cable that can be ordered from 365id AB or bought in your local computer store.



Male USB A to male USB B male USB B



USB cable from 365id Scanner



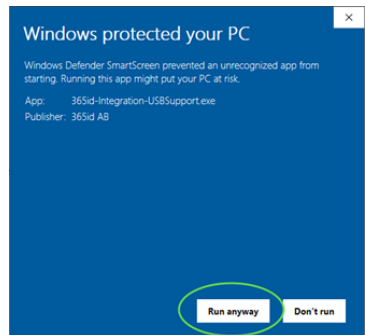
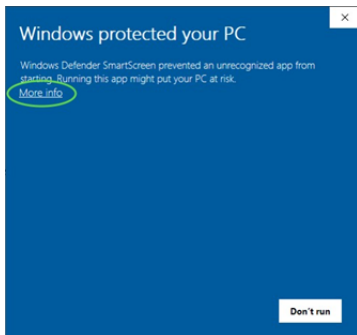
USB to client's workstation

### Install 365id Integration – USB Support software

The 365id Integration – USB Support software will make the information from your 365id Scanner available to applications on your computer. To install the software, download the installation program by clicking [here](#) then proceed with the steps below

Run the installation program (by double-clicking on the downloaded file). You may be presented with a “Windows protected your PC” or a similar dialog.

If so, click “**More info**” then click “**Run anyway**”



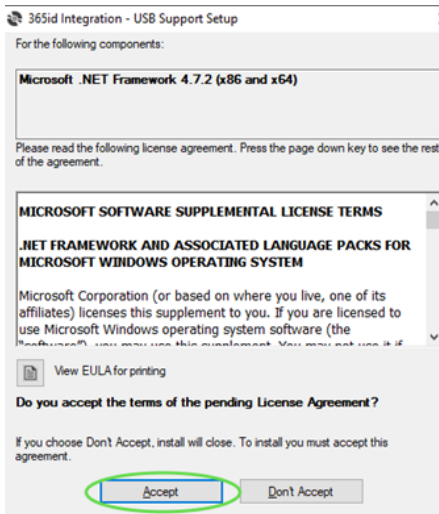
# 365ID | SIXT COBRA INTEGRATION

## Installation – USB Support software

### Install 365id Integration – USB Support software – 2

You may now see a dialog for installing “Microsoft .Net Framework 4.7.2”.

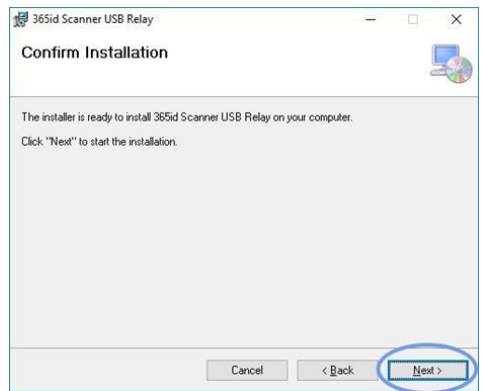
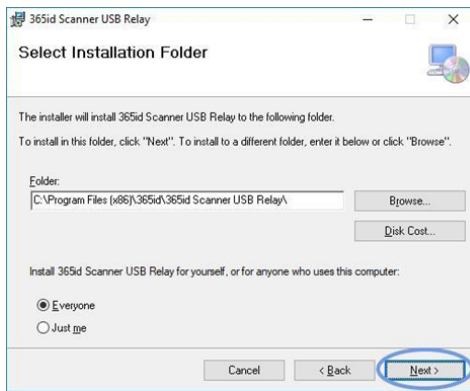
Click “**Accept**” to continue and In the dialog box that follow, click “**Next**”



### Install 365id Integration – USB Support software – 3

We recommend that you keep the settings as they are, but you are free to change them to your requirements.

When you are done, click **“Next”** and then **“Next”** again in the dialogue box that follows.



You may be asked to confirm that the program is allowed to make changes to your hard drive. Once completed, the dialog can be closed by clicking **“Close”**



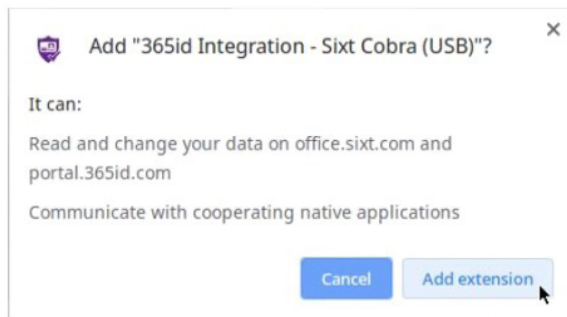
## Installation – Sixt Cobra (USB) software

### Sixt Cobra (USB) software

The 365id Integration – Sixt Cobra (USB) software is an extension for your Google Chrome web browser. The software will automatically write textual information from scanned driving licenses and passports into Sixt Cobra.

To install it, open the following URL in your Google Chrome web browser  
[https://chrome.google.com/webstore/detail/365id-integration-sixt-co/ooceajjeifpjlignonifhgdplapodhhlb?utm\\_source=ext\\_app\\_menu](https://chrome.google.com/webstore/detail/365id-integration-sixt-co/ooceajjeifpjlignonifhgdplapodhhlb?utm_source=ext_app_menu)

Click **“Add to Chrome”**: and In the dialog that follows, click **“Add extension”**



Once the installation is completed, close all browser windows before you run the Cobra application

**Sixt Cobra (USB) service subscription**

You must have an activated Sixt Cobra service subscription to be able to use the service.

Please contact 365id for more information

For sales related matters please contact

[info@365id.com](mailto:info@365id.com) or call +46 10 12 21 900

For technical or support related issues please contact

[support@365id.com](mailto:support@365id.com) or call +46 10 12 21 999